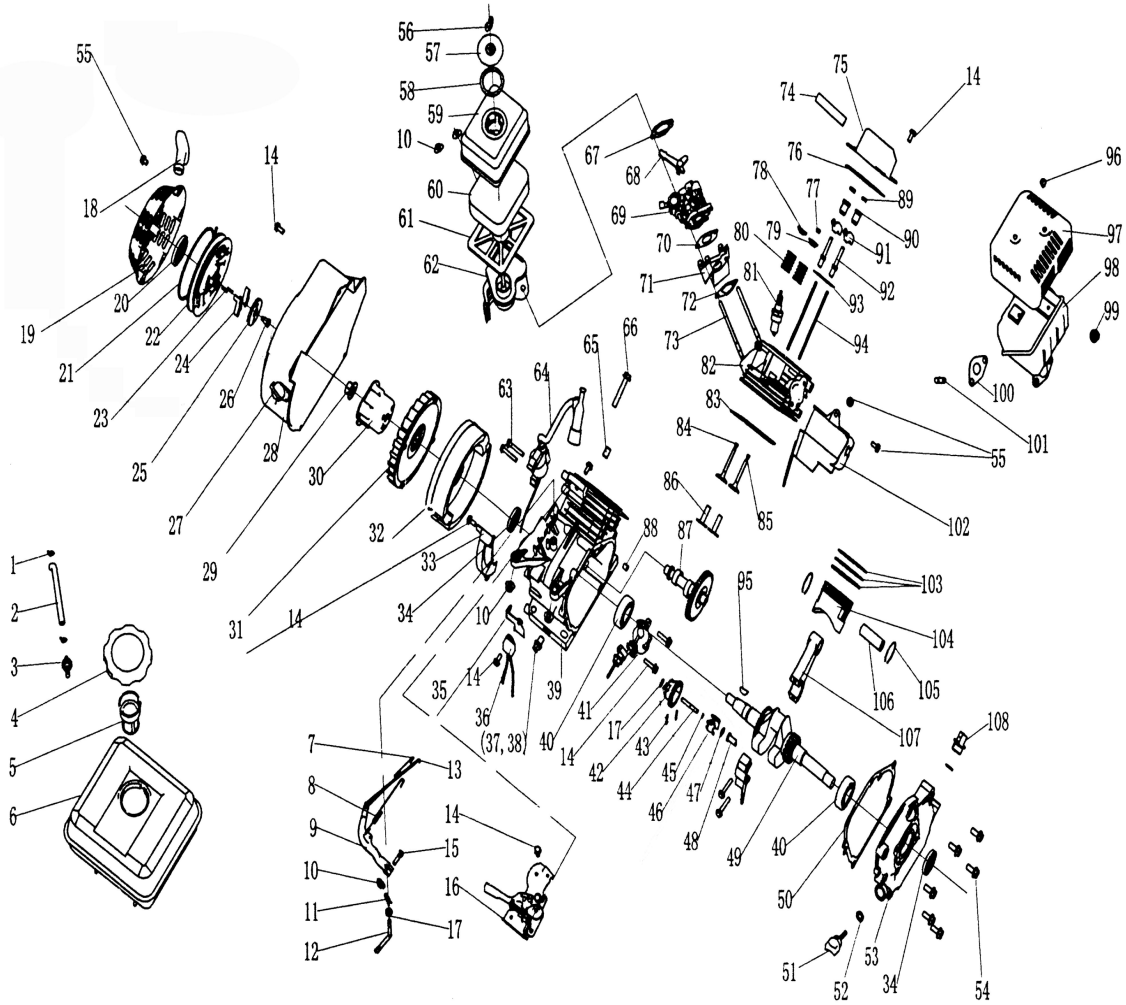


GM 170F GAOSLINE/PETROL ENGINE SPARE PARTS LIST



| PART NO | Description | 170F [Your Quantity] |
|---------|------------------------------------|-------------------------|
| 1 | CLIP TUBE | |
| 2 | TUBE FUEL | |
| 4 | CAP COMP FUEL FILLER | |
| 5 | FILTER FUEL | |
| 6 | TANK COMP FUEL | |
| 7 | SPRING THROTTLE RETURN A | |
| 8 | SPRING THROTTLE RETURN B | |
| 9 | ARM GOVERNOR | |
| 10 | NUT FLANGE | |
| 11 | PIN LOCK | |
| 12 | SHAFT GOVERNOR ARM | |
| 13 | ROD GOVERNOR | |
| 14 | BOLT FLANGE | |
| 15 | BOLT QUADRATE HEAD | |
| 16 | CONTROL ASSY | |
| 17 | WASHER PIN | |
| 18.26 | KNOB RECOIL STARTER | |
| 27 | SWITCH ASSY ENGINE STOP(OIL ALERT) | |
| 28 | COVER COMP FAN | |
| 29 | NUT SPECIAL | |
| 30 | PULLEY STARTER | |
| 31 | FAN COOLING | |
| 32 | FLYWHEEL COMP | |
| 33 | PLATE SIDE SUPPORT | |

| No. | Description | |
|-------|-----------------------------|--|
| 34 | OIL SEAL25*41.25*6 | |
| 37 | BOLT DRAIN PLUG | |
| 38 | WASHER DRAIN PLUG | |
| 39 | CRANK CASE | |
| 40 | 170FA_6205_P6 | |
| 41 | OIL LEVEL SWITCH | |
| 42.47 | GEAR GOVERNOR | |
| 48 | BOLT FLANGE | |
| 49 | CRANKSHAFT COMP FOR G105 | |
| 49--2 | CRANKSHAFT COMP FOR G500 | |
| 50 | PACKING CASE COVER | |
| 51.52 | OIL FILLER CAP | |
| 53 | COVER | |
| 54 | BOLT FLANGE | |
| 55 | BOLT FLANGE | |
| 56 | NUT TOOL BOX SETTING | |
| 57.62 | AIR CLEANER ASSY | |
| 60 | FILTER OUTER | |
| | FILTER OUTER | |
| 63 | BOLT FLANGE 6*30 | |
| 64 | COIL ASSY IGNITION | |
| 65 | PIN DOWER | |
| 66 | BOLT FLANGE | |
| 67 | SPACER COMP AIR CLEANER for | |
| 69 | CARBURETOR | |
| 70 | PACKING CABURETOR | |
| 71 | INSULATOR CARBURETOR | |
| 72 | PACKING INSUL ATOR | |
| 73 | BOLT STUD IN | |
| 74 | TUBE BREATHER | |
| 75 | COVER COMP HEAD | |
| 76 | PACKING HEAD COVER | |
| 77 | RATATOR VALVE | |
| 78 | SEAL GUIDE | |
| 79 | RETAINER VALVE SPRING | |
| | VALVE SPRING SEAT | |
| 80 | SPRING VALVE | |
| 81 | PLUG SPARK | |
| 82 | HEAD COMP CYLINDER | |
| 83 | GASKET CYLINDER | |
| 84 | VALVE IN | |
| 85 | VALVE EX | |
| 86 | LEFTER VALVE | |
| 87 | CAMSHAFT ASSY | |
| 88 | PIN SHAFT | |
| 89.92 | ROCKER COMBINATION | |
| 93 | PLATE ASSY | |
| 94 | ROD PUSH | |
| 96.98 | MUFFLER ASSY | |
| 99 | NUT HEX 8MM | |
| 100 | GASKET MUFFLER | |
| 101 | BOLT STUD EXHAUST | |
| 102 | LOWER GUARD | |
| 103 | RING SET | |
| 104 | PISTON | |
| 105 | CLIP PISTON PIN | |
| 106 | PIN PISTON | |
| 107 | CONNECTING ROD | |