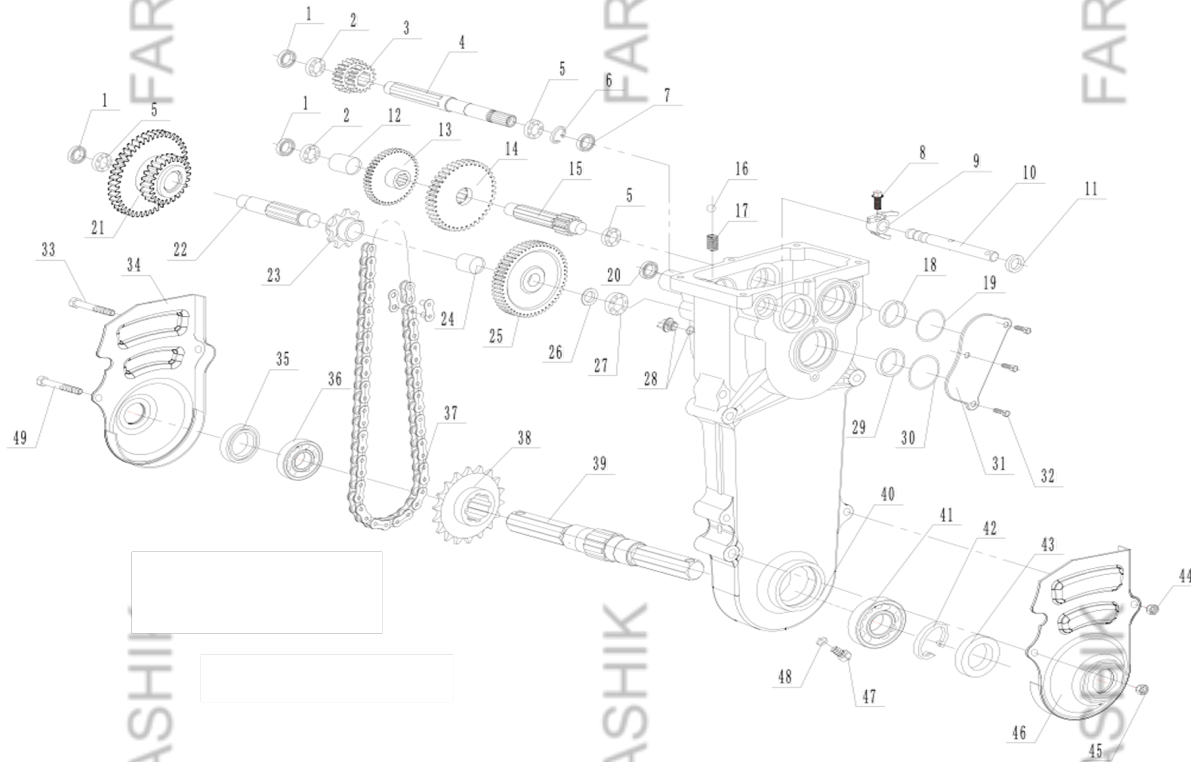


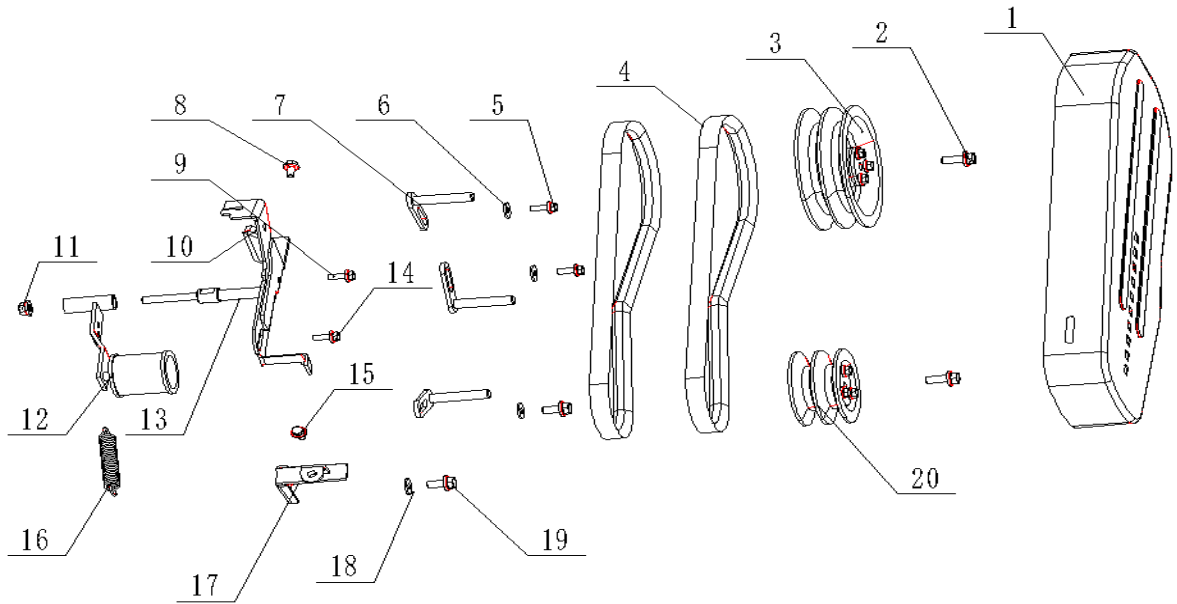
**TRANSMISSION BOX**



No.	Description	Your Quantity
1	Plate Cover; $\phi 28 \times 6$	
2	Deep Groove Ball Bearing; 6002_P6_15_32_9	
3	Active Double Gear; Z=14/17_2M	
4	Main Shaft; Z=19_L_180mm	
5	Deep Groove Ball Bearing; 6202_P6_15_35_11;	
6	Retaining Ring for Hole; GB/T893.1_ $\phi 35(38 \times 1.5)$	
7	Skeleton Oil Seal; d=15_D=35_b=7	
9	Shift Fork	
10	Shift Fork Shaft	
11	Skeleton Oil Seal; d=12_D=22_b=5	
12	Bush; R_18.5_r_23_21	
13	First Gear; Z=35_2M	
14	Second Gear; Z=38_2M	
15	Countershaft ; Z=11_2M	
17	Shift Spring; 65Mn_ $\phi 6$	
18	Bush; R_30_r_35_7	
19	O.ring; $\Phi 40 \Phi 2.65$	
21	Reverse Gear; Z=21/39_2M	
22	Drive Sprocket Shaft; Z=19	
23	Driving Sprocket; Z=9	
24	Bush; R_20.3_r_25.5_12.5	

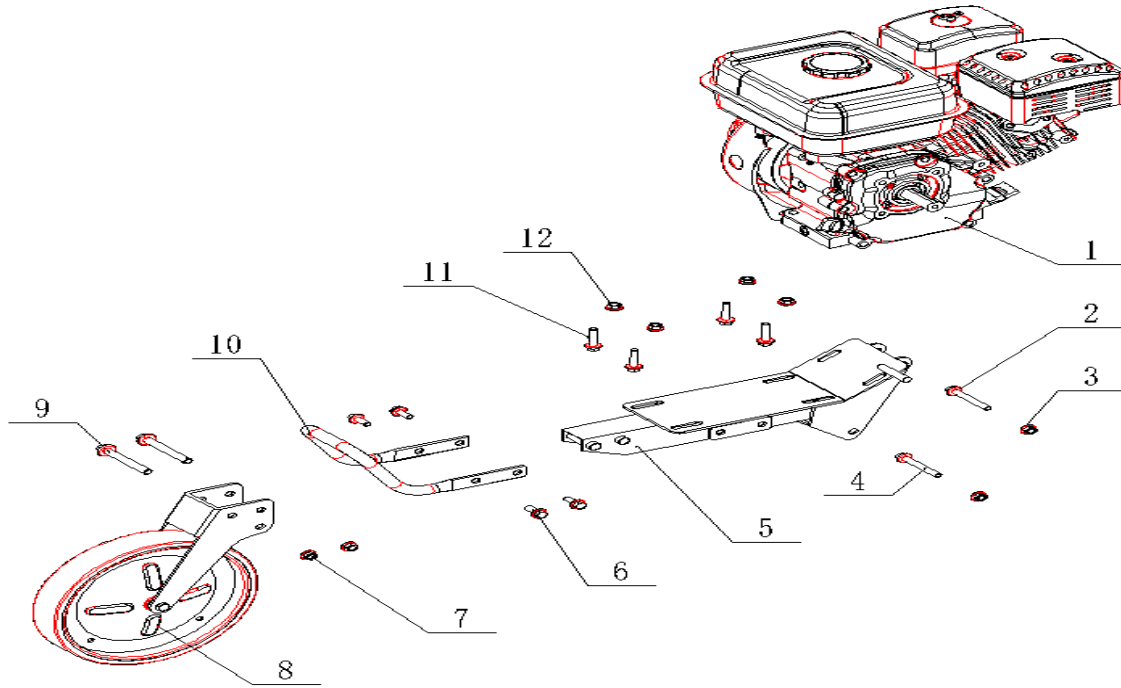
No.	Description	Your Quantity
25	Driving Gear; Z=45_2M	
27	Deep Groove Ball Bearing; 6203_P6_17_40_12;	
28	Oil Dipstick Assembly; M20_35	
29	Bush; R_35_r_41.5_5.5	
30	O.ring; $\Phi 40_{\Phi 2.65}$	
31	Oil Seal Plate; Q235	
34	Protect Cover Left	
35	Iron Shell Oil Seal; d=25_D=41_b=9.5 (G-500-A)	
36	Deep Groove Ball Bearing; 6005_P6_25_47_12;	
37	Chain	
38	Driven Sprocket; Z=18	
39	Hexagonal Output Shaft; L_253	
40	Transimission Box	
41	Deep Groove Ball Bearing; 6205_P6_25_52_15;	
42	Retaining Ring for Hole; GB/T893.1_φ52 (56.2*2) ;	
43	Iron Shell Oil Seal; d=25_D=52_b=9.5 (G-500-A)	
46	Protect Cover Right	
47	Oil Drain Bolt; M10_1.25_10	

## Belt And Belt Cover Part



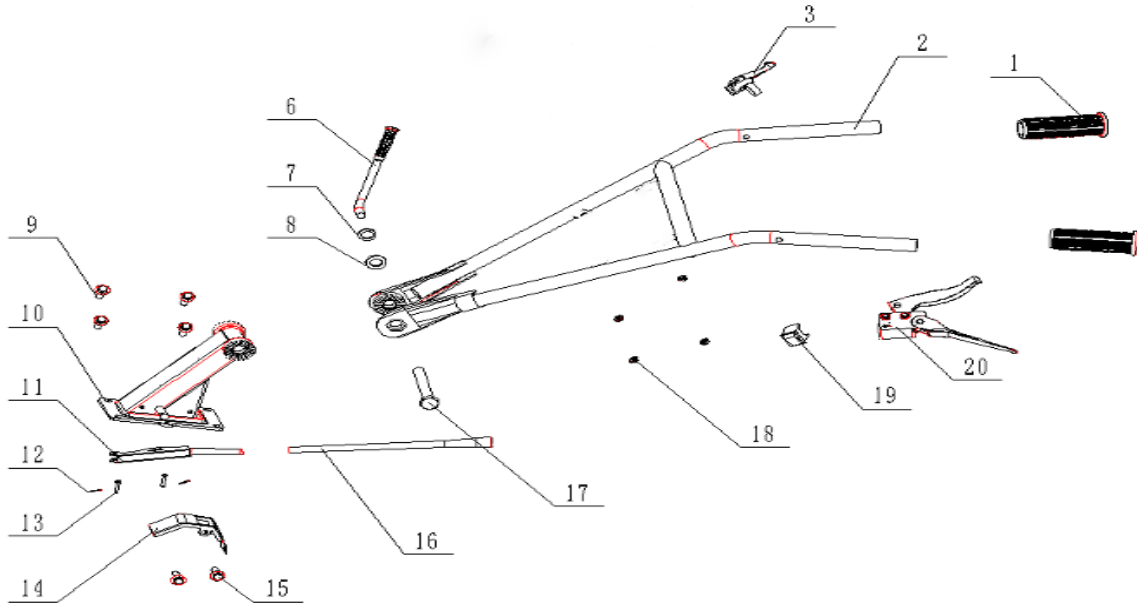
No.	Description	Your Quantity
1	Belt cove	
3	Driven pulley	
4	Belt	
7	Belt pressure block I	
10	Cable bracket	
12	Tension wheel assembly	
13	Tensioner support shaft	
16	Return Spring	
17	Belt pressure block II	
20	Driving pulley	

# FENDERS



No.	Description	Your Quantity
1	Engine	
2	Hexagon Flange Bolts;M8*65_8.8	
3	Hexagon Flange Nuts;M8_8	
4	Hexagon Flange Bolts;M8*65_8.8	
5	Engine Support Frame	
6	Hexagon Flange Bolts;M8*16_8.8	
7	Hexagon Flange Nuts; M10_8	
8	Front wheel assembly	
9	Hexagon Flange Bolts; M10_75_8.8	
10	Protection Frame	
11	Hexagon Flange Bolts;M8*35_8.8	
12	Hexagon Flange Nuts;M8_8	

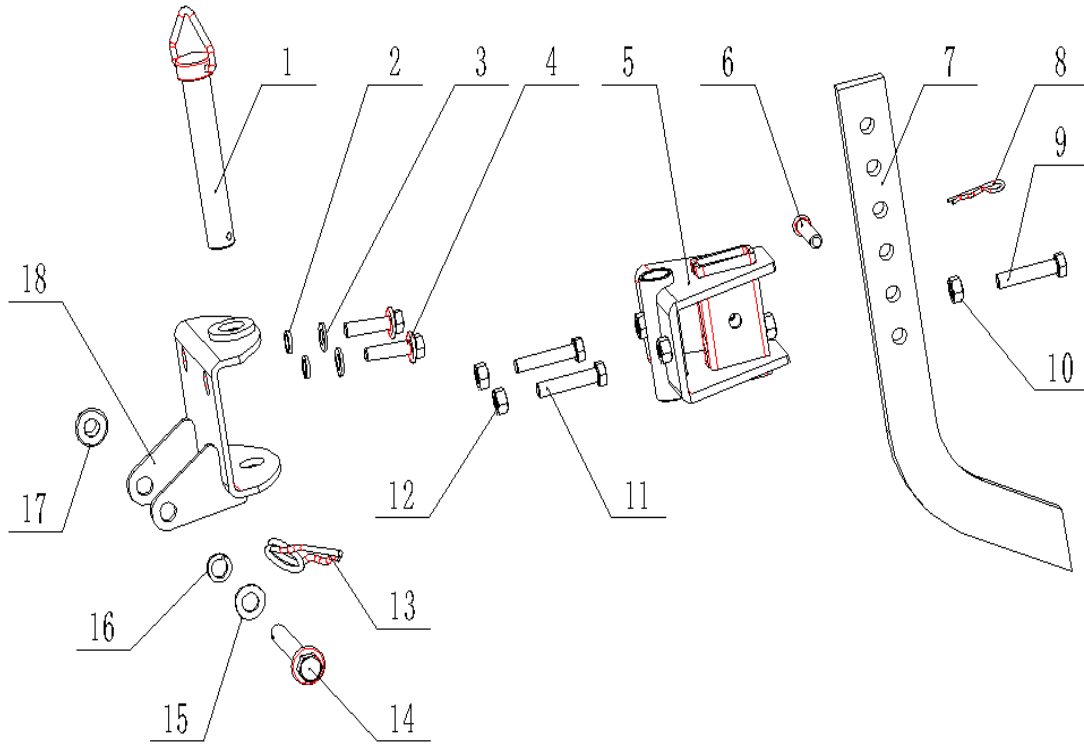
## Handle System



No.	Description	Your Quantity
1	Rubber Tube	
2	Handle frame new model	
3	Throttle switch assembly; 950mm new model	
6	Lock handle	
7	Spring washer; $\phi 16$	
8	Washer; 17*30*3	
9	Hexagon Flange Bolts; M8*20_8.8	
10	Armrest seat new model	
11	Shift lever new model	
12	Cotter pin; $\phi 1 \times 20$	
13	Pin Roll; 5*25	

No.	Description	Your Quantity
14	Gear display plate new model	
15	Hexagon Flange Bolts;M6*10_8.8	
16	Shift lever new model	
17	Hexagon Bolts; M16_150_8.8	
18	Clutch Wire; 840mm new model	
19	Flameout switch assembly; 1100mm new model	
20	Clutch handle new model	

# Connector - G500

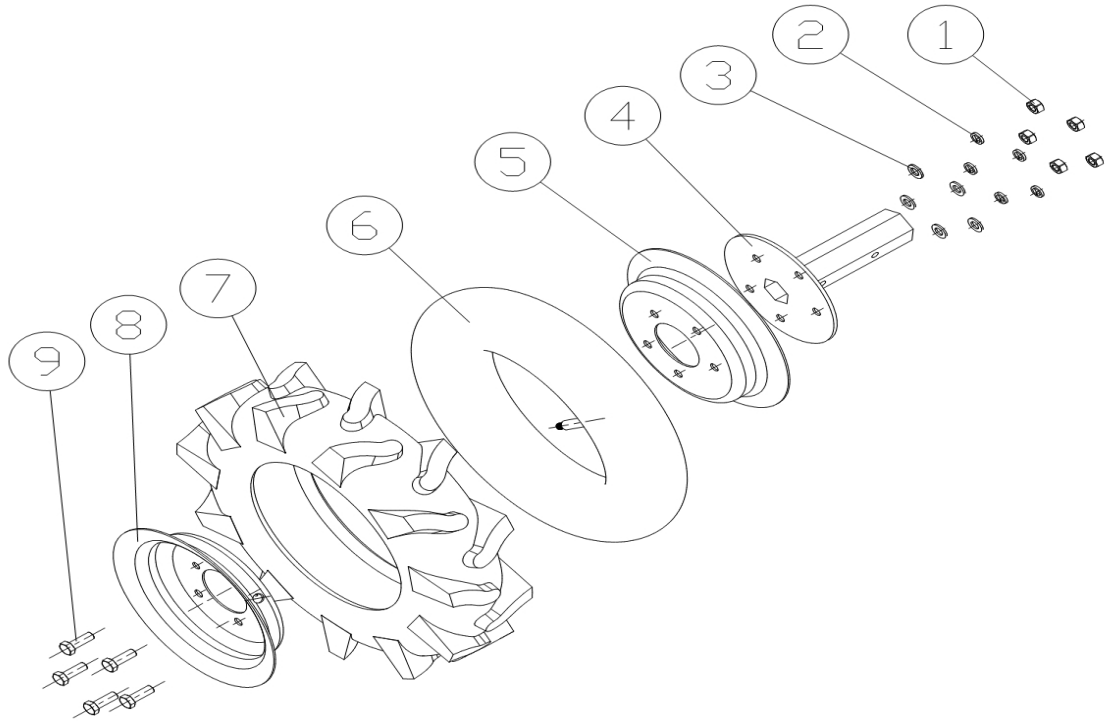


No.	Description	Your Quantity
1	Connector Pin Roll;φ16*125	
2	Spring washer;φ8	
3	Washer;8.5*16*1.6	
4	Hexagon Flange Bolts; M8*25_8.8	
5	Connector	
6	Pin Roll; 8*40	
7	Resistance Bar; Z type	

No.	Description	Your Quantity
8	R Pin; 3*60	
9	Hexagon Bolts; M8*25_8.8	
10	Hexagon nuts; M8*25_8.8	
11	Hexagon Bolts; M8*25_8.8	
12	Hexagon nuts; M8*25_8.8	
13	R Pin; 3*60	
14	Hexagon Bolts; M10_80_8.8	
15	Washer;10.5*20*2	
16	Spring washer; $\phi$ 10	
17	Hexagon nuts; M10_8	
18	Connector rod	

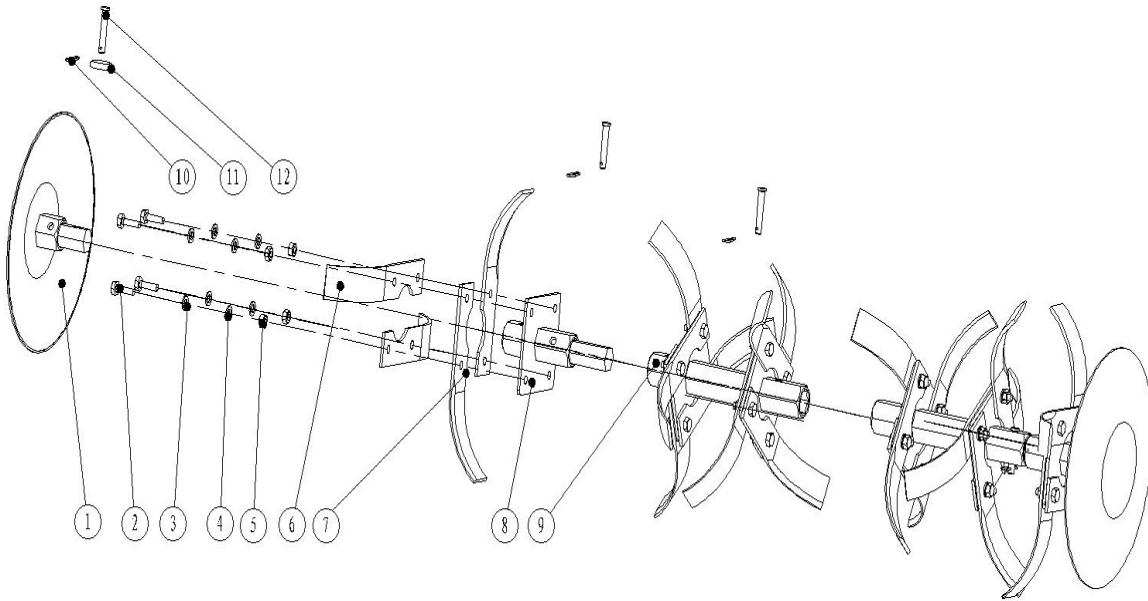


# TYRES ASSEMBLY



No.	Description	Your Quantity
1	Hex nuts_M8_8	
2	Spring washer_φ8	
3	Washer_10.5*20*2	
4	Wheel axle_L=116mm	
5+8	Wheel hub (no hole)	
6	Inner tube	
7	Tire	
8	Wheel hub (with hole)	
9	Hexagon head bolt_M8_25_8.8	

# BLADES



No.	Description	Your Quantity
1	Trimming wheel_#23	
2	Euro V blade (4*3)_left	
3	Euro V blade (4*3)_right	
10	R pin_2*38	
11	Washer_8.5*16*1.6	
12	Pin Shaft_8*40 B	