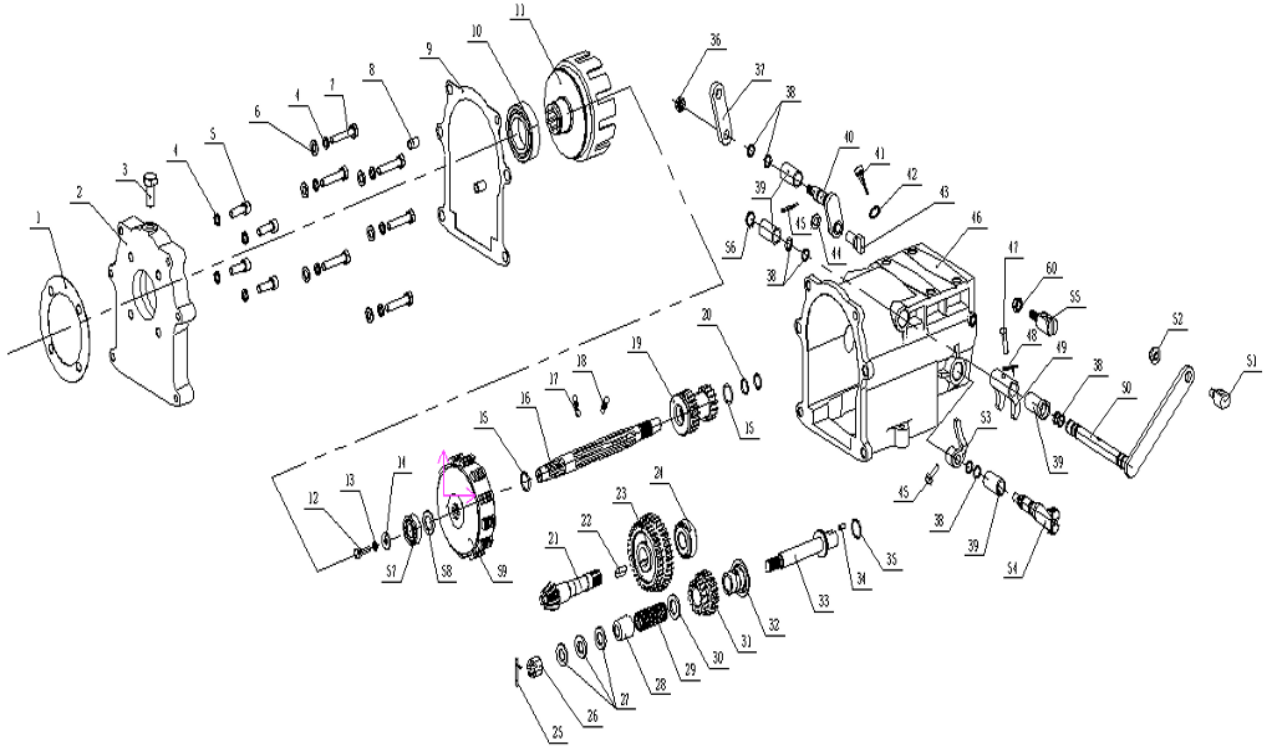


UPPER GEARBOX-1



No.	Description	Your Quantity
1	Gasket for engine cover_0.5mm	
2	Flange	
3	Exhaust bolt_M12_1.25_L=25	
4	Spring washer_φ8	
5	Hexagon socket head screwM8_25_8.8	
6	Washer_8.5*16*1.6	
7	Hexagon head bolts.full thread M8_40_8.8.	

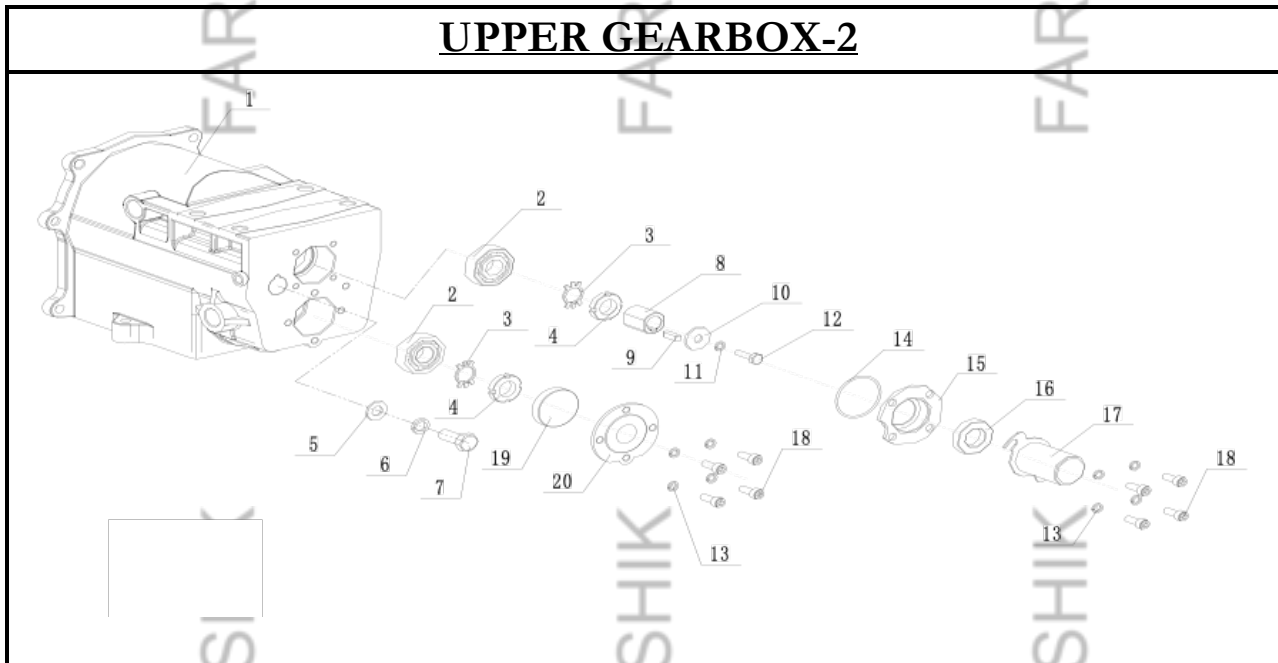
No.	Description	Your Quantity
8	Positioning pin_d=8_D=10_b=14	
9	Gasket for flange_1mm	
10	Deep groove ball bearing_6007_P6_35_62_14.	
11	Clutch Cover	
12	Hexagon head bolts.full thread M8*30_8.8	
13	Spring washer_φ6	
14	Big washer_Φ6.5*Φ18*1.6	
15	Wire retaining ring for shaft_φ20	
16	Spindle_L=238	
17	Steel ball_Sφ6.3	
18	Shift spring_Φ5×0.8×17	
19	Active double gear_Z=20/16	
20	O.ring_Φ12_Φ2	
21	Main bevel gear I_Z=9	
22	Key_25*6*6	
23	Driven double gear_Z=35/39	

No.	Description	Your Quantity
24	Tapered Roller Bearings_30203	
25	Split pin_φ2.5*25	
26	Hexagon thin slotted nut GB/T 6181_M12x1.75	
27	Washer_13*24*1.5	
28	Reverse gear	
29	Reverse spring_L=60_7.75	
30	Adjusting washer_16_27_4	
31	Reverse double gear_Z=22/16	
32	Reverse push	
33	Reverse shaft	
34	Cylindrical pi_5×10	
35	O.ring_Φ18_Φ1.9	
36	Non.metallic hexagonal lock nuts M10_8	
37	Shift rocker arm	
38	O.ring_Φ10_Φ2	
39	Bush_14*18*30	

No.	Description	Your Quantity
40	Shift fork shaft	
43	Shift block	
44	Washer_Φ10*Φ22*4	
45	Hexagon head bolts.full thread_M6_20_8.8	
46	Upper Gear Box	
47	Pin shaft_6*25_ B Type	
48	Split pin_φ1*20	
49	Clutch fork	
50	Clutch fork shaft	
51	Line seat_M8 for clutch	
52	Hex nut_M8_8	
53	Reverse gear block	
54	Reverse gear shaft	
55	Line seat_M8 for reverse (G-105FQSD-A)	
56	Circlip for shaft.Type A_φ14 (12.9*1)	
57	Deep groove ball bearing_6202	

No.	Description	Your Quantity
58	Washer for clutch_φ15.5_φ26_2.5	
59	Clutch core	
60	Hex nut_M8_8	
41/42	Dipstick assembly_M20	

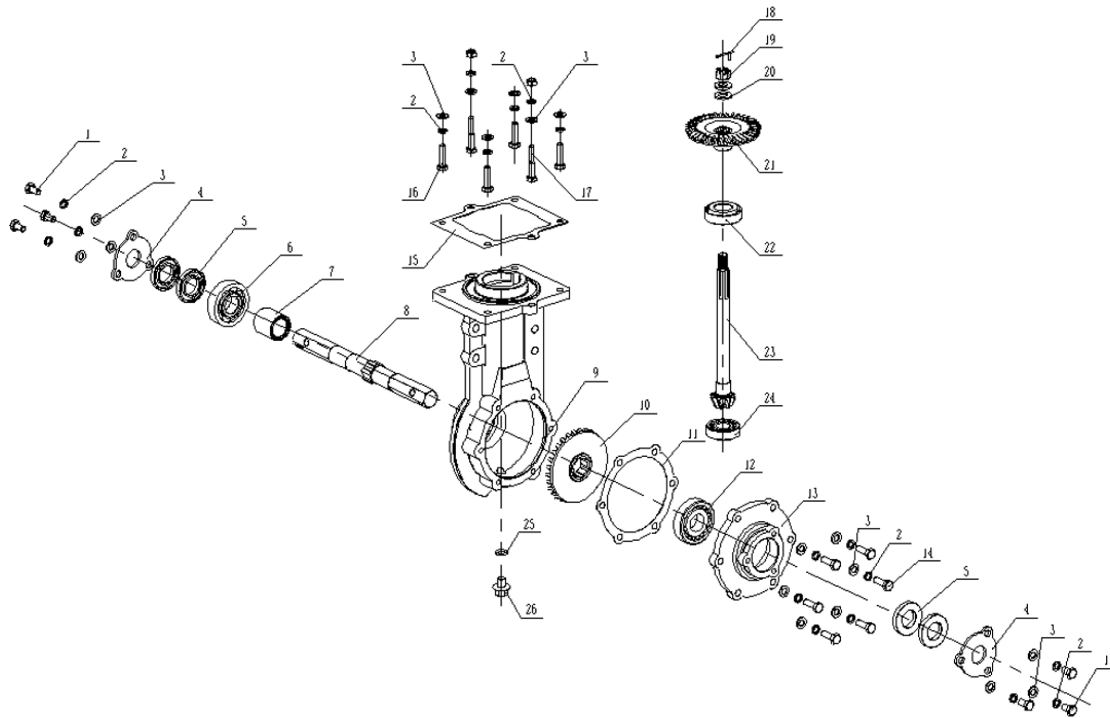
UPPER GEARBOX-2



No.	Description	Your Quantity
1	Upper gearbox with e-AgroCare	
2	Deep groove ball bearing_6203	
3	Stop washers for round nuts_d=16	
4	Small round nut_M16*1.5	
5	Washer_Φ10*Φ22*4	
6	Spring Washer_φ10	
7	Hexagon head bolt_M10_25_8.8	
8	Flat key set	
10	Big washer_Φ6.5*Φ18*1.6	
9	Flat key_5*5*18	
11	Spring washer_φ6	
12	Hexagon head bolts.full thread_M6_20_8.8	
13	Spring washer_φ6	

No.	Description	Your Quantity
14	O.ring_Φ40_Φ1.8	
15	Spindle end cover	
16	Skeleton oil seal_d=20_D=35_b=7	
17	Spindle dust cover	
18	Hexagon head bolts.full thread_M6_20_8.8	
19	Stuffy_φ40×7	
20	Cover	

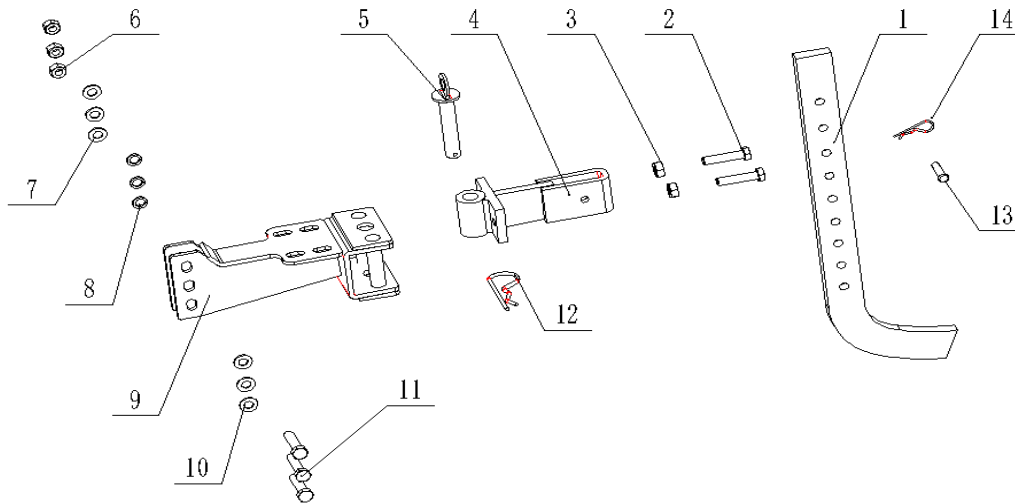
LOWER WALKING GEARBOX



No.	Description	Your Quantity
1	Hexagon head bolts.full thread M8_12_8.8	
2	Spring_φ8	
3	Washer_8.5*16*1.6	
4	Dust cover	
5	Skeleton oil seal_25*47*7	
6	Deep groove ball bearing_6305	
7	Bush_25.5*36.4*36	
9	Walking gearbox	
8	Hexagonal output shaft	
10	From Bevel Gear II_Z=30	

No.	Description	Your Quantity
11	Gasket for side cover_0.5mm	
12	Tapered Roller Bearings_30305	
13	Side cover	
14	Hexagon head bolts.full thread_M8_30_8.8	
15	Gasket for waling gearbox_0.5mm	
16	Hexagon head bolts.full thread_M8_30_8.8	
17	Hexagon head bolt_M8_45_8.8	
18	Split pin_φ1*20	
19	Hexagon thin slotted nut_M12x1.75	
20	Washer_13*24*2.5	
21	From bevel gear I_Z=38	
22	Tapered Roller Bearings_30204	
23	Main bevel gear II_Z=8	
28	Adjusting washer_26*33*0.1	
24	Tapered Roller Bearings_30205	
27	Hex nuts_M8_8	
	Adjusting washer_26*33*0.5	
26	Oil drain bolt_M12_1.25 (G-105FQSD-A)	
	Gasket for waling gearbox_0.3mm	

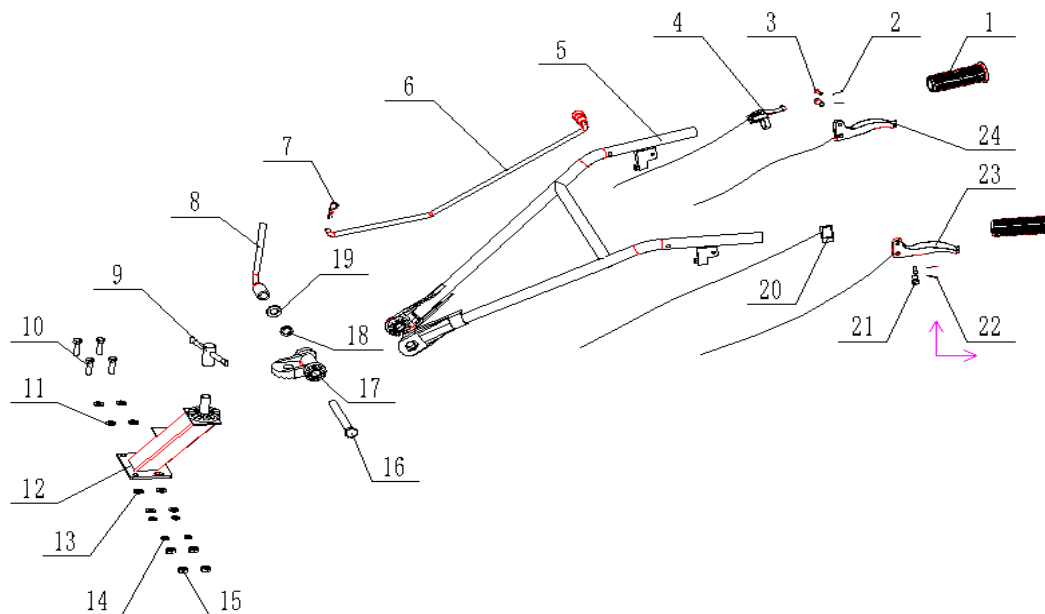
CONNECTOR



No.	Description	Your Quantity
1	Resistance bar	
2	Hexagon head bolts. Full thread_M10_35_8.8	
3	Hex nuts_M10_8	
4	Connecting rod	
5	Pin shaft for connector_φ16*125 (G-105FQSD-A)	
6	Hex nuts_M10_8	
7	Spring washer_φ10	
8	Washer_10.5*20*2	
10	Washer_10.5*20*2	
9	Connecto	
11	Hexagon head bolts. Full thread_M10_50_8.8	
12	R pin_3*60	

No.	Description	Your Quantity
13	Pin shaft_8*40 B Type	
14	R pin_2*38	

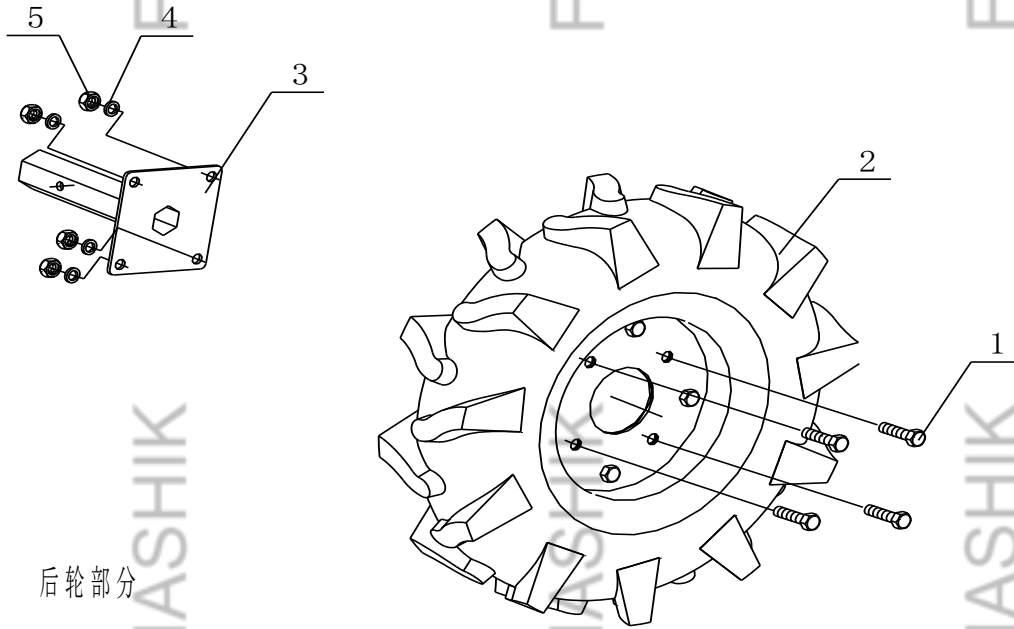
HANDLE SYSTEM



No.	Description	Your Quantity
1	Handle tube	
2	Split pin_φ1*20	
3	Pin shaft_7*22 B Type	
4	Throttle switch assembly_L=1300mm	
5	Handle tube	
6	Handle tube	
7	R pin_2*38	
8	Lock handle_up & down	
10	Hexagon head bolts. Full thread_M10_35_8.8	
9	Lock handle_left & right	
11	Washer_10.5*20*2	

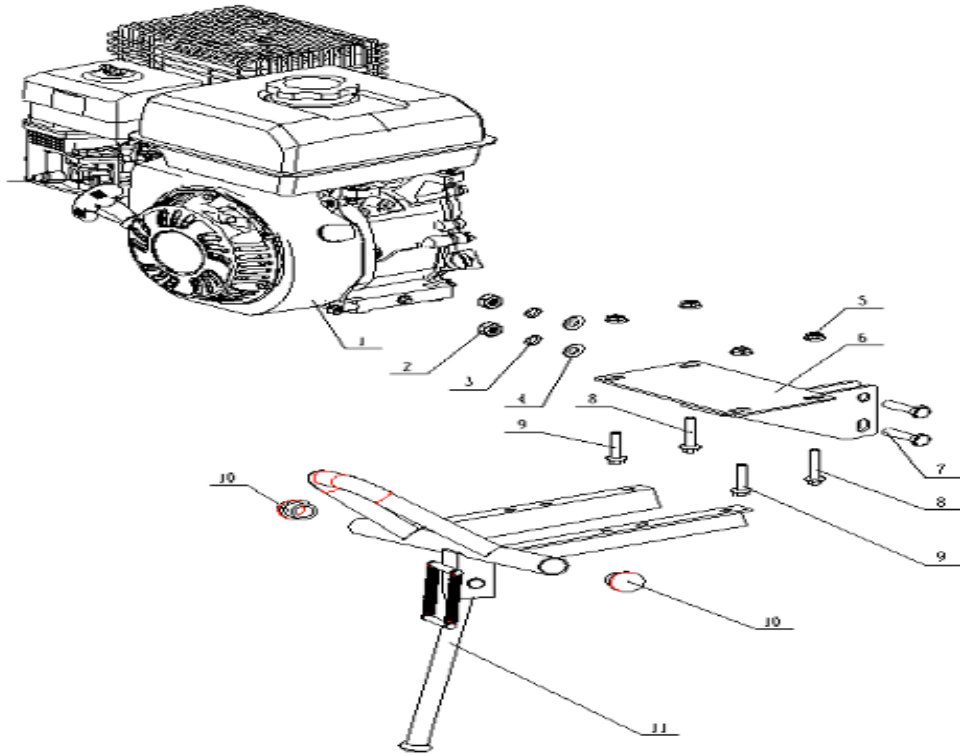
No.	Description	Your Quantity
12	Armrest seat	
	Rubber washer	
13	Washer_10.5*20*2	
14	Spring washer_φ10 (G-105FQSD-A)	
15	Hex nuts_M10_8	
16	Hexagon head bolt_M16_150_8.8	
17	Handle Join	
18	Washer_17*30*3	
19	Spring washer_φ16	
20	Flameout switch assembly_L=1200mm	
21	Pin shaft_10*22 B Type (G-105FQSD-A)	
22	Split pin_φ1*20	
23	Clutch handle	
	Reverse gear wire_L=950mm	
	Clutch wire_L=835mm	
	Lock	
24	Reverse handle	

WHEEL



No.	Description	Your Quantity
1	Hexagon head bolt_M10_25_8.8	
2	Herringbone tire assembly left	
	Herringbone tire assembly right	
3	Wheel axle_L=11	
4	Spring washer_φ10	
5	Hex nuts_M10_8	

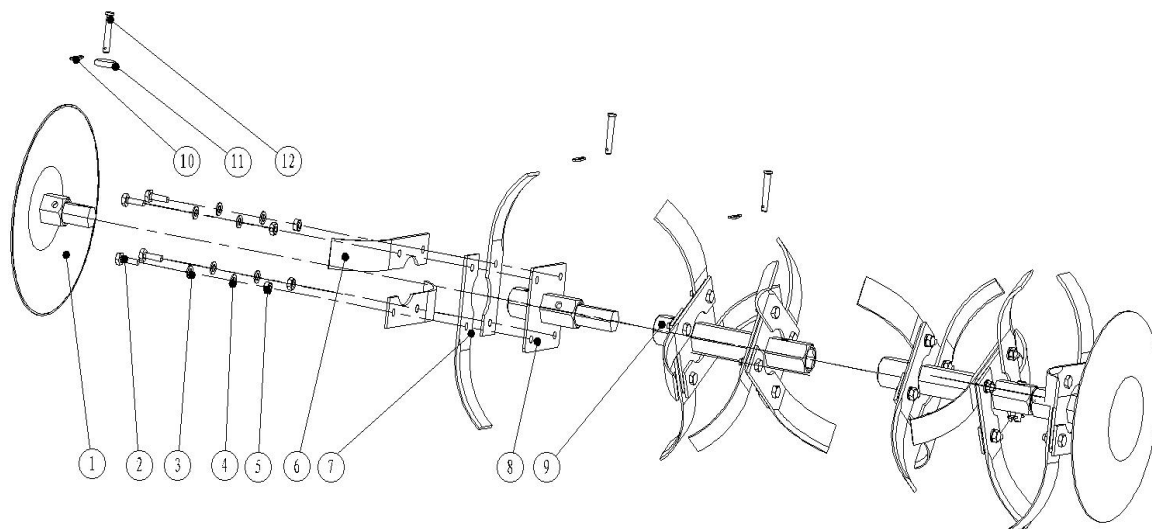
ENGINE PARTS



No.	Description	Your Quantity
1	GM170F Gasoline Engine	
2	Hex nuts_M10_8	
3	Spring washer_φ10	
4	Washer_10.5*20*2	
5	Hexagon flange nut_M8_8	
6 and 11	Engine bracket	

No.	Description	Your Quantity
7	Hexagon head bolts. Full thread_M10_45_8.8	
8	Hexagon flange bolts_M8*45_8.8	
9	Hexagon flange bolts_M8*40_8.8	
11	Protection bar_30*3	

BLADE SYSTEM



No.	Description	Your Quantity
1	Trimming wheel_#23	
2	Dryland Blade	
3	Dryland Blade_right (4*4) (RI500)	
	blade (LH)	
	blade (RH)	
10	R pin_2*38	
11	Washer_8.5*16*1.6	
12	Pin shaft_8*40 B Type (G-105FQSD-A)	